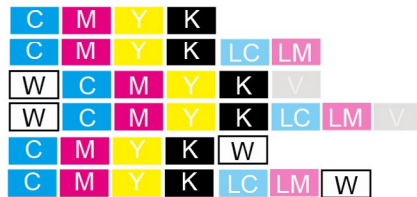
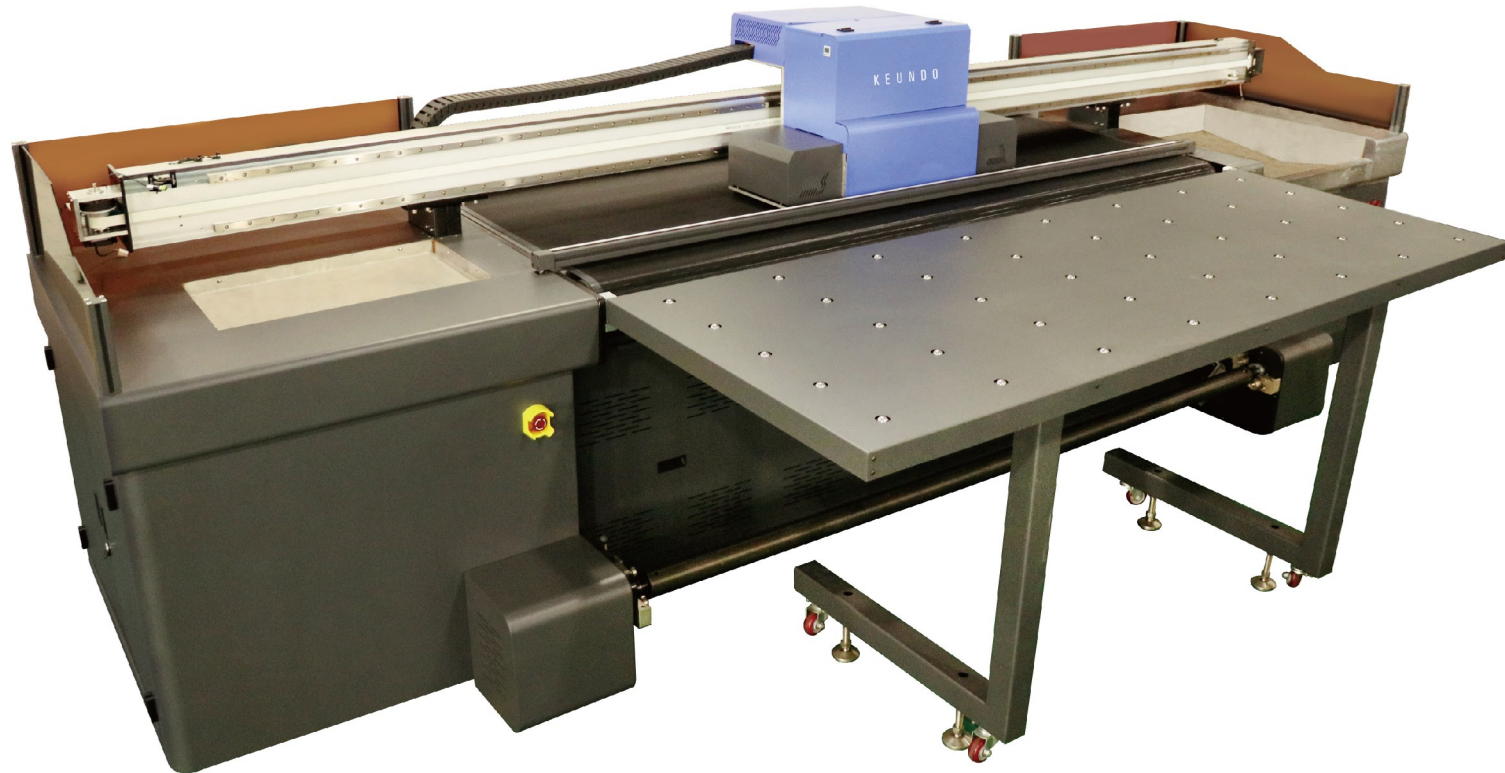


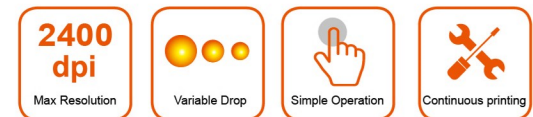
SQ-2500H 【Ricoh Gen6】

KEUNDO 坤度

Hybrid UV Machine / High Precision / High Speed



CMYK / CMYKLcLm + W + Varnish

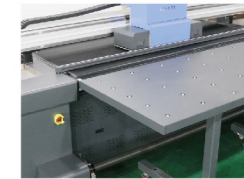
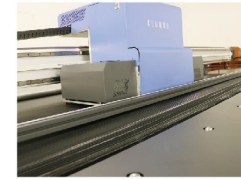


>> Technical Characteristics

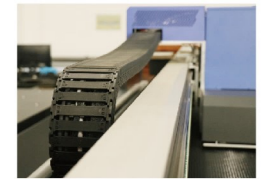
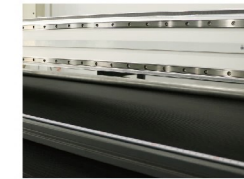
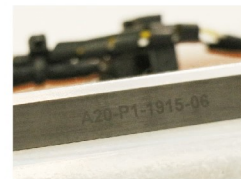
- Cold light LED curing with tiny temperature variation ensures high printing quality.
- Adjustable head height, laser positioning system and movable printing platform result in high-efficiency printing jobs.
- High stability magnetic encoderstrip.
- Air-shaft take up system makes more stable paper collecting
- Stable printing technology and ink supply system reduces maintenance cost.
- International ICC standard with profile curve adjustment function.

>> Technical Specifications

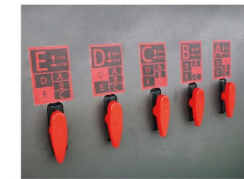
| | | |
|---------------------|---|--|
| MODEL | SQ-2500H | |
| PRINTHEAD TYPE | Ricoh Gen6 | |
| HEAD NUMBER | 3-12 pcs optional | |
| PRINTING SIZE (W*D) | 2500*1000mm | |
| PRINTING TECHNOLOGY | Gray scale piezoelectric inkjet technology | |
| PRINTING RESOLUTION | 720*600dpi,720*900dpi,720*1200dpi etc | |
| INK TYPE | LED UV INK | |
| | Continual Ink Supply Systems (2.5L Ink Tank) C/M/Y/K/Lc/Lm/W/Varnish | |
| PRINTING SPEED | 4PASS - PRODUCTION MODE: | 24 SQM/H (3PCS PRINT HEADS - CMYK+W) |
| | 6PASS - QUALITY MODE: | 16.5 SQM/H (3PCS PRINT HEADS - CMYK+W) |
| | 8PASS - HIGH QUALITY MODE: | 12 SQM/H (3PCS PRINT HEADS - CMYK+W) |
| MEDIA THICKNESS | 1mm-100mm | |
| COLOR CONTROL | ICC standard,ajudtment of ICC and density | |
| RIP | ONXY | |
| ENVIRONMENT | Temperature: 18 C -26 C , Humidity: 30%-75% (RH) | |
| POWER CONSUMPTION | Printing mode:5000W Sleep mode:600W | |
| PRINTER DIMENSION | 4,930(L) x1,544(W) x 1,718H)(Unit : mm) | |
| PACKING WEIGHT | 2.2T | |



Integrated belt & flatbed media feeding system is competent to print both roll and rigid media. Folding extension frame saves space and cost as well. Independent widened platform to accommodate more materials. Air-shaft take up system makes more stable paper collecting .



High stability magnetic encoder strip, dual mute THK guide rails an Igus trailer ensure stability of printing and high quality printing output.



Upgraded structure is stronger, ensuring stable printing during high speed. New Ricoh Gen6 has a higher production capacity and faster speed. Emergency stop button ensures operator to control printer to work in good status for long term.

